

## PASTEL INVENTORY of Carol Smeraldo's paintings

LANDSCAPES: Nova Scotia-PNS



**PNS-1 "Dahlias 1"** acrylic, 20.3x28cm(8x11in)



**PNS-2 "Winter Sun"** 28x20.3cm(11x8in)



**PNS-3 "Sudden Gust"** 42x27cm(16.5x10.75in)



**PNS-4 "Tatamagouche Train Station Inn"** 20.3x57cm(8x22.5in)

**LANDSCAPES: British Columbia-PBC**



**PBC-1 "BC Tangle"** 21.6x28cm(8.5x11in)



**PBC-2 "Under the Giant Cedar"** 23x30cm(9x12in)



**PBC-3 "Kamal, Peace"** 28x20.3cm(11x8in)



**PBC-4 "Last Light 2"** 21.6x28.6cm(8.5x11.25in)



**PBC-5 "Kelp"** 28x21.6cm(11x8.5in)



**PBC-6 "Glimmers"** 28.6x21.6cm(11.25x8.5in)



**PBC-7 Last Light 3** 21.6x28.6cm(8.5x11.25in)



**PBC-8 Last Light 1** 21.6x28.6cm(8.5x11.25in)



**PBC-9 Garden at Dusk** 21.6x28.6cm(8.5x11.25in)



**PBC-10 Flying** 21.6x28.6cm(8.5x11.25in)



**PBC-11 Standing Guard** 21.6x28.6cm(8.5x11.25in)



**PBC-12 Standing Waves** 21.6x28.6cm(8.5x11.25in)



**PBC-13 Hot Springs** 21.6x28.6cm(8.5x11.25in)



**PBC-14 "Persistence"** 43x28cm(17x11in)



**PBC-15 "Tool Shed"** 28.6x21.6cm(11.25x8.5in)



**PBC-16 "Irises 1"** 28.6x21.6cm(11.25x8.5in)

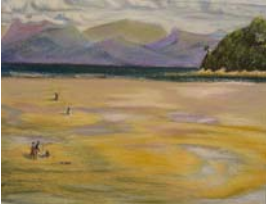
#### **LANDSCAPES-New Zealand-PNZ**



**PNZ-1 "Fishing in New Zealand"** 28x43cm(11x17in)



**PNZ -2 "Fern Trees and Fishing"** 43x28cm(17x11in)

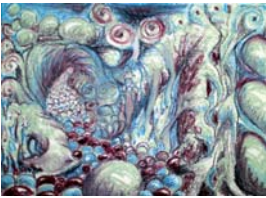


**PNZ-3 “Sun Breaks Through NZ”** 21.6x28.6cm(8.5x11.25in)



**PNZ-4 “Fern Trees on Lake Rotoiti”** 21.6x28.6cm(8.5x11.25in)

**“A Symbolic Journey in Porcelain, Part 1”-SJI**  
Pastel Paintings on Paper- Photos by R. Ian Folinsbee  
**SECTION ONE-“Unknowing”**



**SJI 1 “Inner Landscapell”**



**SJI 2 “Inner Landscape 1”**



**SJI 3 “Inner Inspiration”**

**SECTION TWO-“Seeking”**



**SJI 17 “Not Knowing”**



**SJI 18 “Costumed Self #1”**



**SJI 19 “Looking Through”**

**SECTION THREE-“Excessing”**



**SJI 49 “Jumping Off Haydn”**



**SJI 50 “Transience”**



**SJI 61 "Mindful Candy"**

**SECTION FOUR-"Overview"**



**SJI 61 "Over-Under"**



**SJI 62 "Costumed Self #2"**

**FIGURES-PF**



**PF 1 "Eleanor 1", Tulip 1, Tulip 2**



**PF 2 "Under Sea Muse"**



**PF 3 "Muses Searching" 23.5x30cm(9.25x11.8in)**



**PF 4 "Eleanor 2"**

**STILL LIFES-PSL**



**PSL 1 "Shitakes and Pink Oysters 2"** 28.6x21.6cm(11.25x8.5in)



**PSL 2 "Shitakes and Pink Oysters 2"** 22x30cm(8.75x11.75in)



**PSL 3 "The Good Life"** 21.6x28.6cm(8.5x11.25in)



**PSL 4 "Apricots and Cherries"** 21.6x28.6cm(8.5x11.25in)

**OTHERS-PI, PCC**



**PI 1 "Coast Road, Italy"** 28.6x21.6cm(11.25x8.5in)



**PI 2 "Churches"** 28.6x21.6cm(11.25x8.5in)



**PCC 1 "Clara's Journey"** 28.6x21.6cm(11.25x8.5in)